

GROUND FLOOR



URBANISTIC PARAMETERS

Plot Area	415 m ²
Rating	urban
Build typology	residencial - city garden
Occupacion max	50%
Max buildability	0,5 m ² c/m ² s
Max height	2 levels 7,0 m
Minimum road alignment	5 m
Minimum boundary separation	3m

Living Room - Kitchen	55,75 m ²
Master Bedroom	16,28 m ²
Master Bathroom	6,60 m ²
Bedroom 2	18,68 m ²
Bedroom 3	14,25 m ²
Bathroom 1	3,89 m ²

TOTAL LIVING AREA	115,45 m²
--------------------------	-----------------------------

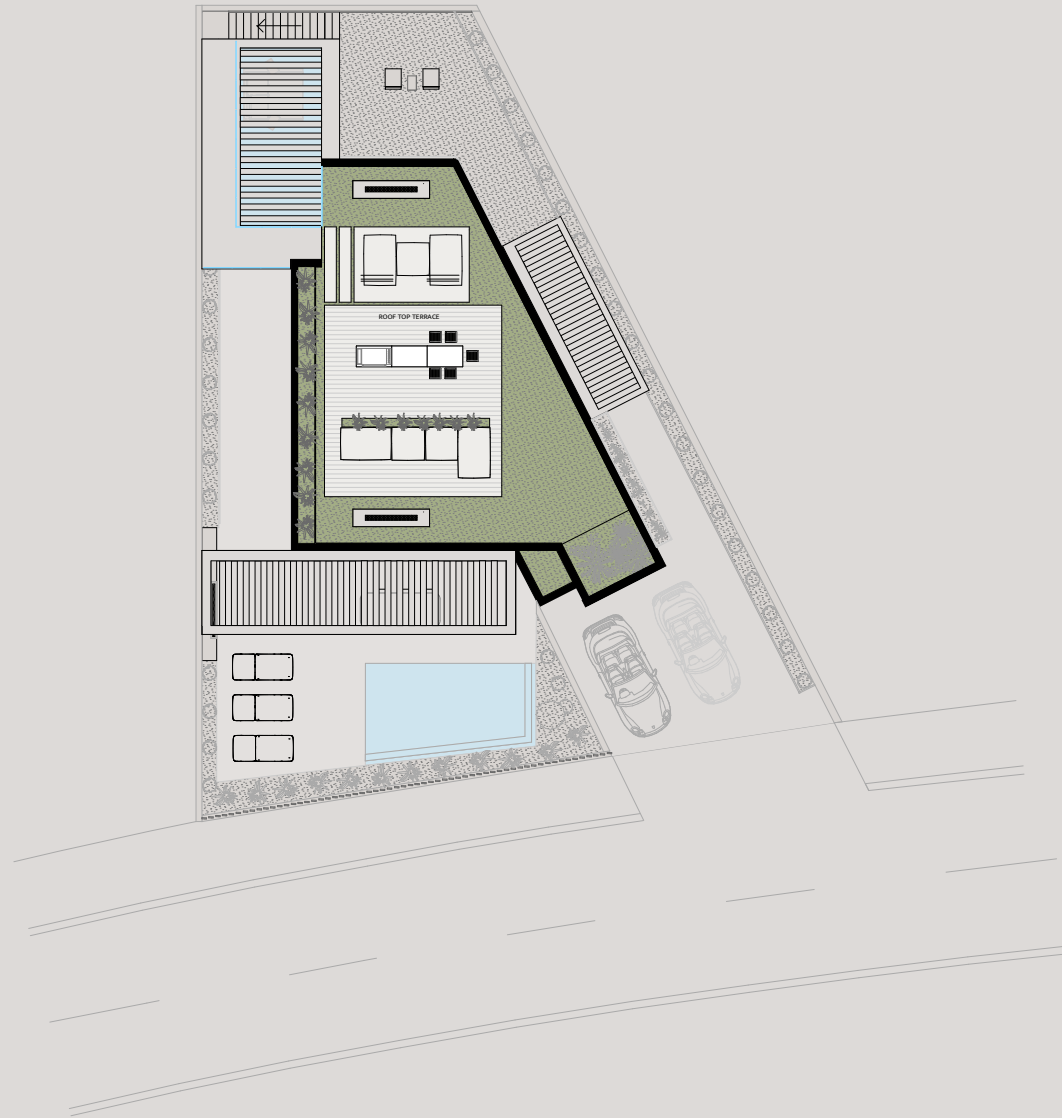
TOTAL BUILD AREA	123,3 m²
PRINCIPAL TERRACE	126,70 m²

MASTER BEDROOM TERRACE	70,37 m²
-------------------------------	----------------------------

GARAGE & ENTRANCE	79,01 m²
------------------------------	----------------------------

GENERAL PLAN

ROOF TOP FLOOR



URBANISTIC PARAMETERS

Plot Area	415 m ²
Rating	urban
Build typology	residencial - city garden
Occupacion max	50%
Max buildability	0,5 m ² c/m ² s
Max height	2 levels 7,0 m
Minimum road alignment	5 m
Minimum boundary separation	3m

ROOF TOP TERRACE	109,9 M ²
------------------	----------------------

TOTAL BUILD AREA	123,3 m²
-------------------------	----------------------------

GENERAL PLAN