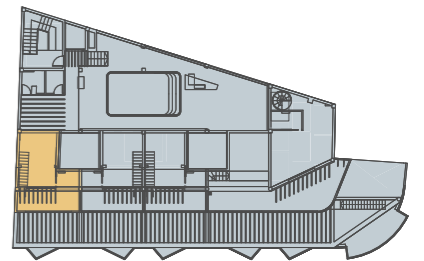
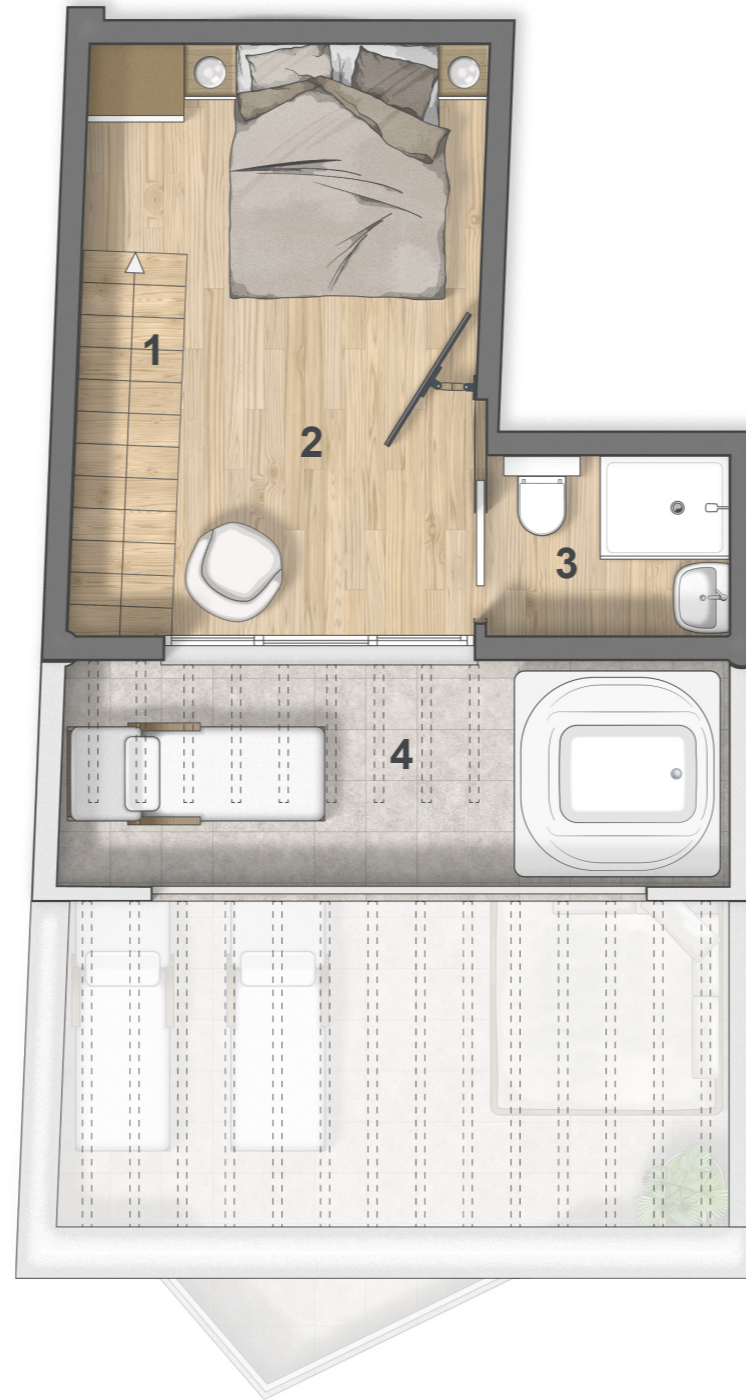
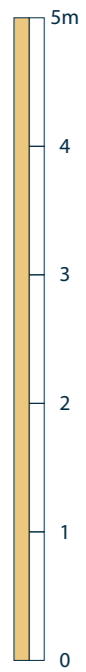


NIVEL 3
Puerta A

1	Vestíbulo	2.45 m ²
2	Pasillo	3.25 m ²
3	Cocina-estar-comedor	26.20 m ²
4	Dormitorio Ppal	13.05 m ²
5	Baño	4.50 m ²
6	Terraza	17.00 m ²

Sup. útil	66.45 m ²
Sup. construida	76.25 m ²



NIVEL 4
Puerta A

1	Escalera	2.40 m ²
2	Dormitorio	13.85 m ²
3	Baño	2.65 m ²
4	Solarium	9.05 m ²

Sup. útil	27.95 m ²
Sup. construida	31.15 m ²